

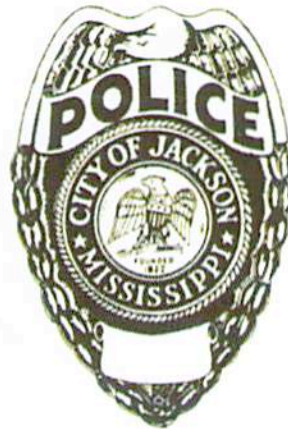
Jackson Police Department



## Major Crime Weekly Report

Patrol Division:

Statistics/GIS



Citywide Total for the week of

**March 24, 2014 thru March 30, 2014**

Prepared By:  
COMSTAT/Intelligence  
Analysts Unit

These COMSTAT numbers are compiled from reported offenses. The actual numbers that are reported may change if crimes are reported or discovered at a later date and the crimes occurred during the above time period.

## Table of Contents

<b>Major Crimes Graph.....</b>	<b>1</b>
<b>Crimestat Update.....</b>	<b>2</b>
<b>Citywide Major Crimes Overview .....</b>	<b>3</b>
<b>Property Crimes Overview .....</b>	<b>4</b>
<b>Violent Crimes Overview .....</b>	<b>5</b>
<b>Precinct One Overview .....</b>	<b>6</b>
<b>Precinct Two Overview .....</b>	<b>7</b>
<b>Precinct Three Overview.....</b>	<b>8</b>
<b>Precinct Four Overview .....</b>	<b>9</b>

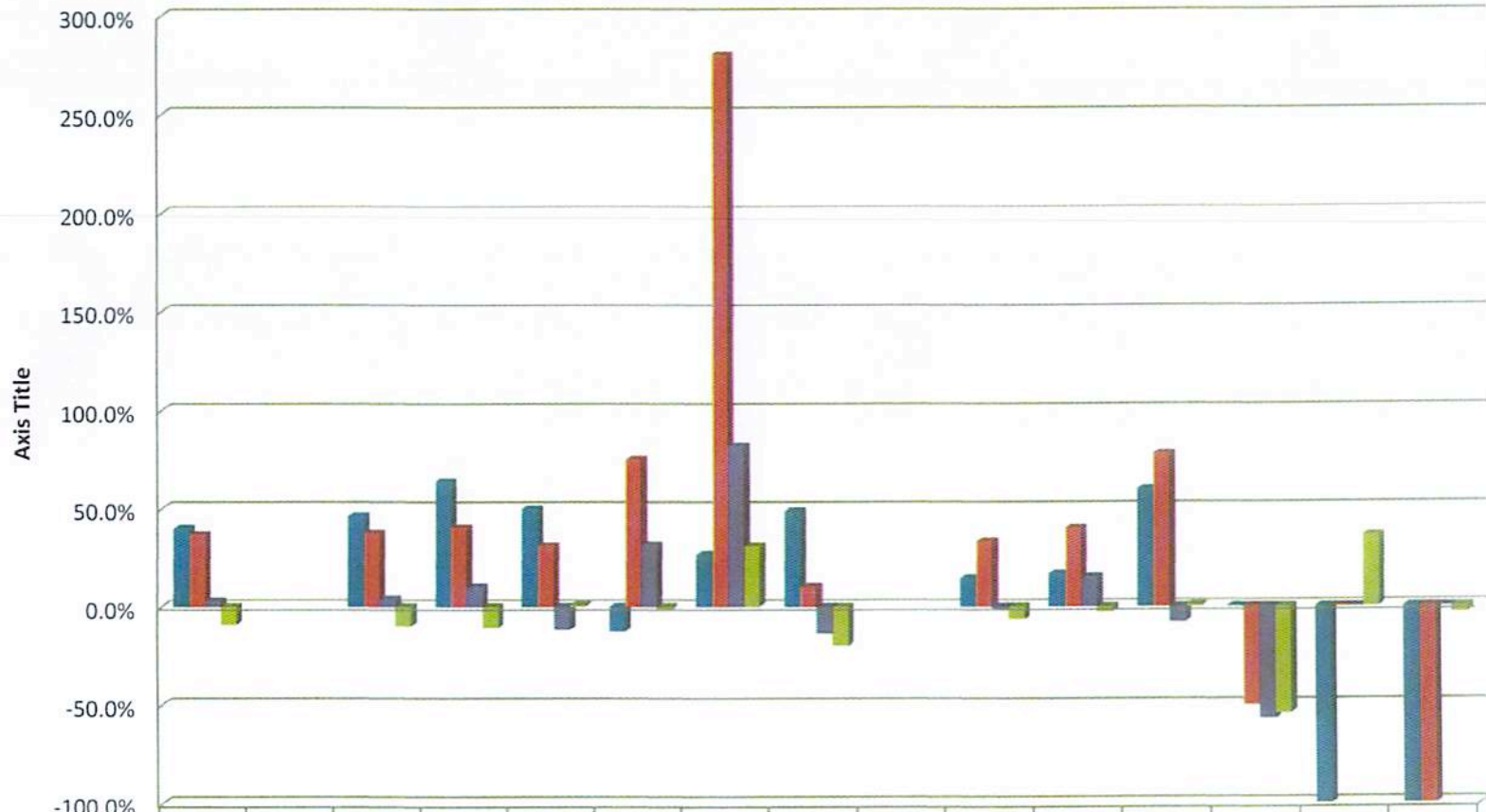
These COMSTAT numbers are compiled from reported offenses. The actual numbers that are reported may change if crimes are reported or discovered at a later date and the crimes occurred during the above time period.

## Table of Contents

<b>Major Crimes Graph.....</b>	<b>1</b>
<b>Crimestat Update.....</b>	<b>2</b>
<b>Citywide Major Crimes Overview .....</b>	<b>3</b>
<b>Property Crimes Overview .....</b>	<b>4</b>
<b>Violent Crimes Overview .....</b>	<b>5</b>
<b>Precinct One Overview .....</b>	<b>6</b>
<b>Precinct Two Overview .....</b>	<b>7</b>
<b>Precinct Three Overview.....</b>	<b>8</b>
<b>Precinct Four Overview .....</b>	<b>9</b>

These COMSTAT numbers are compiled from reported offenses. The actual numbers that are reported may change if crimes are reported or discovered at a later date and the crimes occurred during the above time period.

## Major Crimes March 24, 2014 through March 30, 2014



	Total Major Crimes	Total Property	Auto Burglary	Auto Theft	Business Burglary	Grand Larceny	House Burglary		Total Violent	Aggravated Assault	Armed Robbery	Carjacking	Homicide	Rape
■ Last Week	39.9%	46.4%	63.9%	50.0%	-12.5%	26.7%	48.6%		14.3%	16.7%	60.0%	0.0%	-100.0%	-100.0%
■ Last Year	36.9%	37.6%	40.5%	31.3%	75.0%	280.0%	10.0%		33.3%	40.0%	77.8%	-50.0%	0.0%	-100.0%
■ Last 28 da	2.9%	3.9%	9.9%	-11.7%	31.8%	81.8%	-13.6%		-0.8%	15.2%	-8.0%	-57.1%	0.0%	0.0%
■ Last YTD	-9.2%	-9.8%	-10.5%	0.8%	-1.1%	31.3%	-20.0%		-6.6%	-2.9%	0.6%	-54.3%	36.4%	-3.3%

Jackson Police Department  
 Major Crime Overview for  
 March 24, 2014 Through March 30, 2014

Crime	This Wk.		Past 28 da.		Last Year		%
	This Wk.	Last Wk.	Past 28 da.	Last Year	This Year	Last Year	
Total Major Crimes	193	138	598	581	1926	2122	-9.2%
Total Property	161	110	481	463	1570	1741	-9.8%
Auto Burglary	59	36	178	162	502	561	-10.5%
Auto Theft	21	14	68	77	238	236	0.8%
Business Burglary	7	8	29	22	91	92	-1.1%
Grand Larceny	19	15	60	33	147	112	31.3%
House Burglary	55	37	146	169	592	740	-20.0%
Total Violent	32	28	117	118	356	381	-6.6%
Aggravated Assault	14	12	53	46	136	140	-2.9%
Armed Robbery	16	10	46	50	155	154	0.6%
Carjacking	2	0	3	7	21	46	-54.3%
Homicide	0	2	4	4	15	11	36.4%
Rape	0	4	1	11	29	30	-3.3%
PCT 1	48	34	131	119	481	504	-4.6%
Total Property	39	29	100	91	387	424	-8.7%
Total Violent	9	5	31	28	94	80	17.5%
PCT 2	50	43	207	160	593	592	0.2%
Total Property	45	33	171	114	473	454	4.2%
Total Violent	5	10	36	46	120	138	-13.0%
PCT 3	38	26	109	129	367	468	-21.6%
Total Property	26	17	75	103	291	373	-22.0%
Total Violent	12	9	34	26	76	95	-20.0%
PCT 4	57	35	152	180	485	558	-13.1%
Total Property	51	31	135	155	419	490	-14.5%
Total Violent	6	4	17	25	66	68	-2.9%

Major Crimes



**Jackson Police Department**  
**Major Crime Overview for**  
**March 24, 2014 Through March 30, 2014**

**Violent Crimes**

	This Wk.	Last Wk.	Δ%	Last Yr.	Δ%	Past 28 da. This Year	Past 28 da. Last Year	Δ%	This Year YTD	Last Year YTD	Δ%
<b>Total Violent Crimes</b>	<b>32</b>	<b>28</b>	<b>14.3%</b>	<b>24</b>	<b>33.3%</b>	<b>117</b>	<b>118</b>	<b>-0.8%</b>	<b>356</b>	<b>361</b>	<b>-6.6%</b>
<b>Aggravated Assault</b>	<b>14</b>	<b>12</b>	<b>16.7%</b>	<b>10</b>	<b>40.0%</b>	<b>53</b>	<b>46</b>	<b>15.2%</b>	<b>136</b>	<b>140</b>	<b>-2.9%</b>
Pct. 1	2	1	100.0%	4	-50.0%	11	16	-38.9%	32	49	-34.7%
Pct. 2	3	4	-25.0%	3	0.0%	16	16	0.0%	48	45	6.7%
Pct. 3	7	4	75.0%	3	133.3%	20	9	122.2%	36	36	0.0%
Pct. 4	2	3	-33.3%	0	N/A	6	3	100.0%	20	10	100.0%
<b>Armed Robbery</b>	<b>16</b>	<b>10</b>	<b>60.0%</b>	<b>9</b>	<b>77.8%</b>	<b>46</b>	<b>50</b>	<b>-8.0%</b>	<b>155</b>	<b>154</b>	<b>0.6%</b>
Pct. 1	6	3	100.0%	0	N/A	16	6	166.7%	47	17	176.5%
Pct. 2	2	4	-50.0%	0	N/A	15	21	-28.6%	51	67	-23.9%
Pct. 3	5	2	150.0%	2	150.0%	7	9	-22.2%	18	34	-47.1%
Pct. 4	3	1	200.0%	7	-57.1%	8	14	-42.9%	39	36	8.3%
<b>Carjacking</b>	<b>2</b>	<b>0</b>	<b>N/A</b>	<b>4</b>	<b>-50.0%</b>	<b>3</b>	<b>7</b>	<b>-57.1%</b>	<b>21</b>	<b>46</b>	<b>-54.3%</b>
Pct. 1	1	0	N/A	0	N/A	1	0	N/A	4	1	300.0%
Pct. 2	0	0	0.0%	0	0.0%	0	2	-100.0%	5	12	-58.3%
Pct. 3	0	0	0.0%	1	-100.0%	2	5	-60.0%	8	18	-55.6%
Pct. 4	1	0	N/A	3	-66.7%	0	0	0.0%	4	15	-73.3%
<b>Homicide</b>	<b>0</b>	<b>2</b>	<b>-100.0%</b>	<b>0</b>	<b>0.0%</b>	<b>4</b>	<b>4</b>	<b>0.0%</b>	<b>15</b>	<b>11</b>	<b>36.4%</b>
Pct. 1	0	0	0.0%	0	0.0%	0	2	-100.0%	2	7	-71.4%
Pct. 2	0	2	-100.0%	0	0.0%	3	2	50.0%	8	2	300.0%
Pct. 3	0	0	0.0%	0	0.0%	0	0	0.0%	4	2	100.0%
Pct. 4	0	0	0.0%	0	0.0%	1	0 N/A		1	0 N/A	
<b>Rape</b>	<b>0</b>	<b>4</b>	<b>-100.0%</b>	<b>1</b>	<b>-100.0%</b>	<b>11</b>	<b>11</b>	<b>0.0%</b>	<b>29</b>	<b>30</b>	<b>-3.3%</b>
Pct. 1	0	1	-100.0%	0	0.0%	3	2	50.0%	9	6	50.0%
Pct. 2	0	0	0.0%	0	0.0%	2	5	-60.0%	8	12	-33.3%
Pct. 3	0	3	-100.0%	1	-100.0%	5	3	66.7%	10	5	100.0%
Pct. 4	0	0	0.0%	0	0.0%	1	1	0.0%	2	7	-71.4%

**Jackson Police Department**  
**Precinct One Overview for**  
**March 24, 2014 Through March 30, 2014**  
**Major Crimes**

Crime	This Wk	Last Wk	Δ%	Last Yr	Δ%	Past 28 da. This Year	Past 28 da. Last Year	Δ%	This Year YTD	Last Year YTD	Δ%
<b>Total Major Crimes</b>	<b>48</b>	<b>34</b>	<b>41.2%</b>	<b>19</b>	<b>152.6%</b>	<b>131</b>	<b>119</b>	<b>10.1%</b>	<b>481</b>	<b>504</b>	<b>-4.6%</b>
<b>Total Property</b>	<b>39</b>	<b>29</b>	<b>34.5%</b>	<b>15</b>	<b>160.0%</b>	<b>100</b>	<b>91</b>	<b>9.9%</b>	<b>387</b>	<b>424</b>	<b>-8.7%</b>
Auto Burglary	15	6	150.0%	2	650.0%	28	23	21.7%	97	106	-8.5%
Auto Theft	0	3	-100.0%	2	-100.0%	4	13	-69.2%	41	38	7.9%
Business Burglary	4	1	300.0%	0	N/A	9	1	800.0%	17	16	6.3%
Grand Larceny	6	2	200.0%	0	N/A	11	7	57.1%	47	29	62.1%
House Burglary	14	17	-17.6%	11	27.3%	48	47	2.1%	185	235	-21.3%
<b>Total Violent</b>	<b>9</b>	<b>5</b>	<b>80.0%</b>	<b>4</b>	<b>125.0%</b>	<b>31</b>	<b>28</b>	<b>10.7%</b>	<b>94</b>	<b>80</b>	<b>17.5%</b>
Aggravated Assault	2	1	100.0%	4	-50.0%	11	18	-38.9%	32	49	-34.7%
Armed Robbery	6	3	100.0%	0	N/A	16	6	166.7%	47	17	176.5%
Carjacking	1	0	N/A	0	N/A	1	0	N/A	4	1	300.0%
Homicide	0	0	0.0%	0	0.0%	0	2	-100.0%	2	7	-71.4%
Rape	0	1	-100.0%	0	0.0%	3	2	50.0%	9	6	50.0%

**Jackson Police Department**  
**Precinct Two Overview for**  
**March 24, 2014 Through March 30, 2014**  
**Major Crimes**

Crime	This Wk	Last Wk	Δ%	Last Yr	Δ%	Past 28 da. This Year	Past 28 da. Last Year	Δ%	This Year YTD	Last Year YTD	Δ%
<b>Total Major Crimes</b>	<b>50</b>	<b>43</b>	<b>16.3%</b>	<b>40</b>	<b>25.0%</b>	<b>207</b>	<b>160</b>	<b>29.4%</b>	<b>593</b>	<b>592</b>	<b>0.2%</b>
<b>Total Property</b>	<b>45</b>	<b>33</b>	<b>36.4%</b>	<b>37</b>	<b>21.6%</b>	<b>171</b>	<b>114</b>	<b>50.0%</b>	<b>473</b>	<b>454</b>	<b>4.2%</b>
Auto Burglary	12	10	20.0%	11	9.1%	66	40	65.0%	157	154	1.9%
Auto Theft	10	4	150.0%	3	233.3%	30	17	76.5%	79	57	38.6%
Business Burglary	2	2	0.0%	3	-33.3%	7	10	-30.0%	38	41	-7.3%
Grand Larceny	6	7	-14.3%	2	200.0%	26	7	271.4%	45	25	80.0%
House Burglary	15	10	50.0%	18	-16.7%	42	40	5.0%	154	177	-13.0%
<b>Total Violent</b>	<b>5</b>	<b>10</b>	<b>-50.0%</b>	<b>3</b>	<b>66.7%</b>	<b>36</b>	<b>46</b>	<b>-21.7%</b>	<b>120</b>	<b>138</b>	<b>-13.0%</b>
Aggravated Assault	3	4	-25.0%	3	0.0%	16	16	0.0%	48	45	6.7%
Armed Robbery	2	4	-50.0%	0	N/A	15	21	-28.6%	51	67	-23.9%
Carjacking	0	0	0.0%	0	0.0%	0	2	-100.0%	5	12	-58.3%
Homicide	0	2	-100.0%	0	0.0%	3	2	50.0%	8	2	300.0%
Rape	0	0	0.0%	0	0.0%	2	5	-60.0%	8	12	-33.3%



**Jackson Police Department**  
 Precinct Three Overview for  
 March 24, 2014 Through March 30, 2014  
 Major Crimes

Crime	This Wk	Last Wk	Δ%	Last Yr	Δ%	Past 28 da. This Year	Past 28 da. Last Year	Δ%	This Year YTD	Last Year YTD	Δ%
<b>Total Major Crimes</b>	38	26	46.2%	38	0.0%	109	129	-15.5%	367	468	-21.6%
<b>Total Property</b>	26	17	52.9%	31	-16.1%	75	103	-27.2%	291	373	-22.0%
Auto Burglary	7	0	N/A	9	-22.2%	18	27	-33.3%	50	88	-43.2%
Auto Theft	4	4	0.0%	8	-50.0%	16	26	-38.5%	61	71	-14.1%
Business Burglary	1	3	-66.7%	1	0.0%	7	9	-22.2%	23	21	9.5%
Grand Larceny	3	5	-40.0%	2	50.0%	10	6	66.7%	26	23	13.0%
House Burglary	11	5	120.0%	11	0.0%	24	35	-31.4%	131	170	-22.9%
<b>Total Violent</b>	12	9	33.3%	7	71.4%	34	26	30.8%	76	95	-20.0%
Aggravated Assault	7	4	75.0%	3	133.3%	20	9	122.2%	36	36	0.0%
Armed Robbery	5	2	150.0%	2	150.0%	7	9	-22.2%	18	34	-47.1%
Carjacking	0	0	0.0%	1	-100.0%	2	5	-60.0%	8	18	-55.6%
Homicide	0	0	0.0%	0	0.0%	0	0	0.0%	4	2	100.0%
Rape	0	3	-100.0%	1	-100.0%	5	3	66.7%	10	5	100.0%

**Jackson Police Department**  
**Precinct Four Overview for**  
**March 24, 2014 Through March 30, 2014**  
**Major Crimes**

Crime	This Wk	Last Wk	Δ%	Last Yr	Δ%	Past 28 da. This Year	Past 28 da. Last Year	Δ%	This Year YTD	Last Year YTD	Δ%
<b>Total Major Crimes</b>	<b>57</b>	<b>35</b>	<b>62.9%</b>	<b>44</b>	<b>29.5%</b>	<b>152</b>	<b>180</b>	<b>-15.6%</b>	<b>485</b>	<b>558</b>	<b>-13.1%</b>
<b>Total Property</b>	<b>51</b>	<b>31</b>	<b>64.5%</b>	<b>34</b>	<b>50.0%</b>	<b>135</b>	<b>155</b>	<b>-12.9%</b>	<b>419</b>	<b>490</b>	<b>-14.5%</b>
Auto Burglary	25	20	25.0%	20	25.0%	66	72	-8.3%	198	213	-7.0%
Auto Theft	7	3	133.3%	3	133.3%	18	21	-14.3%	57	70	-18.6%
Business Burglary	0	2	-100.0%	0	0.0%	6	2	200.0%	13	14	-7.1%
Grand Larceny	4	1	300.0%	1	300.0%	13	13	0.0%	29	35	-17.1%
House Burglary	15	5	200.0%	10	50.0%	32	47	-31.9%	122	158	-22.8%
<b>Total Violent</b>	<b>6</b>	<b>4</b>	<b>50.0%</b>	<b>10</b>	<b>-40.0%</b>	<b>17</b>	<b>25</b>	<b>-32.0%</b>	<b>66</b>	<b>68</b>	<b>-2.9%</b>
Aggravated Assault	2	3	-33.3%	0	N/A	6	3	100.0%	20	10	100.0%
Armed Robbery	3	1	200.0%	7	-57.1%	8	14	-42.9%	39	36	8.3%
Carjacking	1	0	N/A	3	-66.7%	1	7	-85.7%	4	15	-73.3%
Homicide	0	0	0.0%	0	0.0%	1	0	N/A	1	0	N/A
Rape	0	0	0.0%	0	0.0%	1	1	0.0%	2	7	-71.4%