

COMSTAT

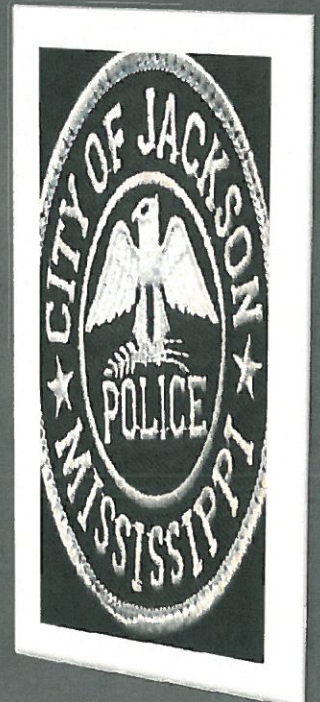
August 24, 2015 to August 30, 2015

*The Badge
of Honor*

*Jackson
Police*

Department

CHIEF LEE VANCE

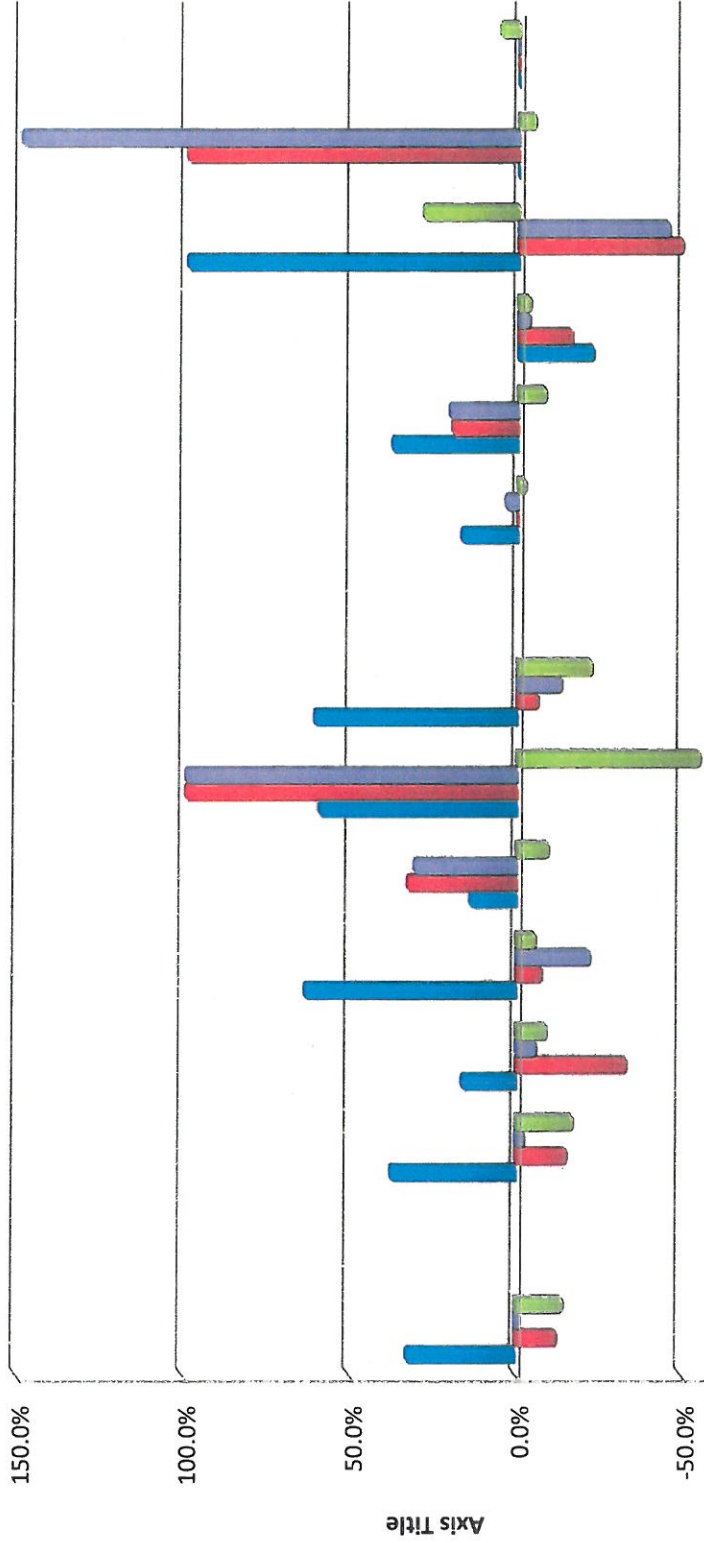


Crime Stats Update Through 30 August 2015

Crime Type	Past 28 Days		Year to Date	
	2015	2014	2015	2014
Auto Burglary	223	238	1420	1568
Auto Theft	79	102	674	718
Business Burglary	42	32	330	366
Grand Larceny	70	35	173	391
House Burglary	159	184	1213	1572
Aggravated Assault	58	48	389	426
Armed Robbery	52	54	449	467
Carjacking	7	13	98	76
Homicide	5	2	36	38
Rape	7	7	91	86

The following unofficial information and accompanying crime maps were studied during the past week's Department CrimeSTAT meeting. The Departments's official crime statistics are reported to the FBI via the Uniform Crime Reporting system. The official statistics are normally made available on a quarterly basis and the official FBI statistics are usually available following compilation of the data at the end of the reporting year.

Major Crimes August 24, 2015 to August 30, 2015



	Total Major Crimes	Total Property	Auto Burglary	Auto Theft	Business Burglary/Larceny	Grand Larceny/Burglary	House Burglary	Total Violent	Aggravated Assault	Armed Robbery	Carjacking	Homicide	Rape
Last Week	33.3%	38.3%	16.7%	64.3%	14.3%	60.0%	61.5%	17.2%	38.5%	-23.1%	100.0%	0.0%	0.0%
Last Year	-12.8%	-15.6%	-33.8%	-8.0%	33.3%	100.0%	-6.7%	0.0%	20.0%	-16.7%	-50.0%	100.0%	0.0%
Last 28 days	-1.8%	-3.0%	-6.3%	-22.5%	31.3%	100.0%	-13.6%	4.0%	20.8%	-3.7%	-46.2%	150.0%	0.0%
Last YTD	-14.6%	-17.4%	-9.4%	-6.1%	-9.8%	-55.8%	-22.8%	-2.7%	-8.7%	-3.9%	28.9%	-5.3%	5.8%

**Jackson Police Department
Major Crime Overview for
August 24, 2015 to August 30, 2015
Major Crimes**

Crime	This Wk.	Last Wk.	Δ%	Last Year	Δ%	Past 28 da.	Past 28 da.	Δ%	This Year	Last Year	Δ%
Total Major Crimes	164	123	33.3%	188	-12.8%	702	715	-1.8%	4873	5708	-14.6%
Total Property	130	94	38.3%	154	-15.6%	573	591	-3.0%	3810	4615	-17.4%
Auto Burglary	49	42	16.7%	74	-33.8%	223	238	-6.3%	1420	1568	-9.4%
Auto Theft	23	14	64.3%	25	-8.0%	79	102	-22.5%	674	718	-6.1%
Business Burglary	8	7	14.3%	6	33.3%	42	32	31.3%	330	366	-9.8%
Grand Larceny	8	5	60.0%	4	100.0%	70	35	100.0%	173	391	-55.8%
House Burglary	42	26	61.5%	45	-6.7%	159	184	-13.6%	1213	1572	-22.8%
Total Violent	34	29	17.2%	34	0.0%	129	124	4.0%	1063	1093	-2.7%
Aggravated Assault	18	13	38.5%	15	20.0%	58	48	20.8%	389	426	-8.7%
Armed Robbery	10	13	-23.1%	12	-16.7%	52	54	-3.7%	449	467	-3.9%
Carjacking	2	1	100.0%	4	-50.0%	7	13	-46.2%	98	76	28.9%
Homicide	2	2	0.0%	1	100.0%	5	2	150.0%	36	38	-5.3%
Rape	2	0	N/A	2	0.0%	7	7	0.0%	91	86	5.8%

PCT 1

Total Crimes	42	38	10.5%	27	55.6%	199	138	44.2%	1232	1311	-6.0%
Total Property	32	28	14.3%	16	100.0%	160	93	72.0%	980	1004	-2.4%
Total Violent	10	10	0.0%	11	-9.1%	39	45	-13.3%	252	307	-17.9%

PCT 2

Total Crimes	35	34	2.9%	56	-37.5%	180	202	-10.9%	1391	1741	-20.1%
Total Property	27	21	28.6%	45	-40.0%	139	165	-15.8%	1074	1421	-24.4%
Total Violent	8	13	-38.5%	11	-27.3%	41	37	10.8%	317	320	-0.9%

PCT 3

Total Crimes	43	23	87.0%	41	4.9%	151	141	7.1%	1103	1156	-4.6%
Total Property	30	19	57.9%	37	-18.9%	120	123	-2.4%	825	882	-6.5%
Total Violent	13	4	225.0%	4	225.0%	31	18	72.2%	278	274	1.5%

PCT 4

Total Crimes	44	28	57.1%	64	-31.3%	173	237	-27.0%	1147	1500	-23.5%
Total Property	41	26	57.7%	56	-26.8%	154	210	-26.7%	931	1308	-28.8%
Total Violent	3	2	50.0%	8	-62.5%	19	27	-29.6%	216	192	12.5%

**Jackson Police Department
Major Crime Overview for
August 24, 2015 to August 30, 2015
Property Crimes**

	This Wk.	Last Wk.	Δ% Last Yr.		Δ%	Past 28 da.	Past 28 da.	Δ%	This Year	Last Year	Δ%
Total Property Crimes	130	94	38.3%	154	-15.6%	573	591	-3.0%	3810	4615	-17.4%
Auto Burglary	49	42	16.7%	74	-33.8%	223	238	-6.3%	1420	1568	-9.4%
Pct. 1	5	8	-37.5%	5	0.0%	41	23	78.3%	277	231	19.9%
Pct. 2	10	12	-16.7%	13	-23.1%	64	66	-3.0%	475	513	-7.4%
Pct. 3	7	8	-12.5%	17	-58.8%	32	29	10.3%	243	184	32.1%
Pct. 4	27	14	92.9%	39	-30.8%	86	120	-28.3%	425	640	-33.6%
Auto Theft	23	14	64.3%	25	-8.0%	79	102	-22.5%	674	718	-6.1%
Pct. 1	3	5	-40.0%	2	50.0%	23	14	64.3%	180	132	36.4%
Pct. 2	4	4	0.0%	11	-63.6%	21	33	-36.4%	204	232	-12.1%
Pct. 3	9	0	N/A	7	28.6%	13	26	-50.0%	140	173	-19.1%
Pct. 4	7	5	40.0%	5	40.0%	22	29	-24.1%	150	181	-17.1%
Business Burglary	8	7	14.3%	6	33.3%	42	32	31.3%	330	366	-9.8%
Pct. 1	2	5	-60.0%	1	100.0%	13	4	225.0%	72	51	41.2%
Pct. 2	4	1	300.0%	4	0.0%	13	12	8.3%	113	180	-37.2%
Pct. 3	0	0	0.0%	1	-100.0%	9	11	-18.2%	74	80	-7.5%
Pct. 4	2	1	100.0%	0	N/A	7	5	40.0%	71	55	29.1%
Grand Larceny	8	5	60.0%	4	100.0%	70	35	100.0%	173	391	-55.8%
Pct. 1	2	2	0.0%	0	N/A	19	5	280.0%	40	96	-58.3%
Pct. 2	3	1	200.0%	3	0.0%	14	15	-6.7%	41	125	-67.2%
Pct. 3	2	1	100.0%	1	100.0%	23	9	155.6%	49	94	-47.9%
Pct. 4	1	1	0.0%	0	N/A	14	6	133.3%	43	76	-43.4%
House Burglary	42	26	61.5%	45	-6.7%	159	184	-13.6%	1213	1572	-22.8%
Pct. 1	20	8	150.0%	8	150.0%	64	47	36.2%	411	494	-16.8%
Pct. 2	6	3	100.0%	14	-57.1%	27	39	-30.8%	241	371	-35.0%
Pct. 3	12	10	20.0%	11	9.1%	43	48	-10.4%	319	351	-9.1%
Pct. 4	4	5	-20.0%	12	-66.7%	25	50	-50.0%	242	356	-32.0%

**Jackson Police Department
Major Crime Overview for
August 24, 2015 to August 30, 2015
Violent Crimes**

	This Wk.	Last Wk.	Δ%	Last Yr.	Δ%	Past 28 da.	Past 28 da.	Δ%	This Year	Last Year	Δ%
Total Violent Crimes	34	29	17.2%	34	0.0%	129	124	4.0%	1063	1093	-2.7%
Aggravated Assault	18	13	38.5%	15	20.0%	58	48	20.8%	389	426	-8.7%
Pct. 1	3	5	-40.0%	5	-40.0%	17	17	0.0%	98	117	-16.2%
Pct. 2	3	5	-40.0%	7	-57.1%	17	16	6.3%	117	128	-8.6%
Pct. 3	11	3	266.7%	1	1000.0%	17	4	325.0%	114	128	-10.9%
Pct. 4	1	0	N/A	2	-50.0%	7	11	-36.4%	60	53	13.2%
Armed Robbery	10	13	-23.1%	12	-16.7%	52	54	-3.7%	449	467	-3.9%
Pct. 1	6	3	100.0%	3	100.0%	18	20	-10.0%	99	138	-28.3%
Pct. 2	2	7	-71.4%	3	-33.3%	19	13	46.2%	138	133	3.8%
Pct. 3	0	1	-100.0%	2	-100.0%	5	10	-50.0%	93	93	0.0%
Pct. 4	2	2	0.0%	4	-50.0%	10	11	-9.1%	119	103	15.5%
Carjacking	2	1	100.0%	4	-50.0%	7	13	-46.2%	98	76	28.9%
Pct. 1	0	1	-100.0%	2	-100.0%	2	5	-60.0%	27	17	58.8%
Pct. 2	2	0	N/A	1	100.0%	3	6	-50.0%	26	24	8.3%
Pct. 3	0	0	0.0%	1	-100.0%	2	2	0.0%	25	20	25.0%
Pct. 4	0	0	0.0%	0	0.0%	0	0	0.0%	20	15	33.3%
Homicide	2	2	0.0%	1	100.0%	5	2	150.0%	36	38	-5.3%
Pct. 1	1	1	0.0%	0	N/A	2	0	N/A	8	8	0.0%
Pct. 2	0	1	-100.0%	0	0.0%	1	1	0.0%	11	13	-15.4%
Pct. 3	1	0	N/A	0	N/A	2	0	N/A	16	9	77.8%
Pct. 4	0	0	0.0%	1	-100.0%	0	1	-100.0%	1	8	-87.5%
Rape	2	0	N/A	2	0.0%	7	7	0.0%	91	86	5.8%
Pct. 1	0	0	0.0%	1	-100.0%	0	3	-100.0%	20	27	-25.9%
Pct. 2	1	0	N/A	0	N/A	1	1	0.0%	25	22	13.6%
Pct. 3	1	0	N/A	0	N/A	5	2	150.0%	30	24	25.0%
Pct. 4	0	0	0.0%	1	-100.0%	1	1	0.0%	16	13	23.1%

**Jackson Police Department
Precinct One Overview for
August 24, 2015 to August 30, 2015
Major Crimes**

Crime	This Wk	Last Wk	Δ%	Last Yr	Δ%	Past 28 da.	Past 28	Δ%	This Year	Last Year	Δ%
Total Major Crimes	42	38	10.5%	27	55.6%	199	138	44.2%	1232	1311	-6.0%
Total Property	32	28	14.3%	16	100.0%	160	93	72.0%	980	1004	-2.4%
Auto Burglary	5	8	-37.5%	5	0.0%	41	23	78.3%	277	231	19.9%
Auto Theft	3	5	-40.0%	2	50.0%	23	14	64.3%	180	132	36.4%
Business Burglary	2	5	-60.0%	1	100.0%	13	4	225.0%	72	51	41.2%
Grand Larceny	2	2	0.0%	0	N/A	19	5	280.0%	40	96	-58.3%
House Burglary	20	8	150.0%	8	150.0%	64	47	36.2%	411	494	-16.8%
Total Violent	10	10	0.0%	11	-9.1%	39	45	-13.3%	252	307	-17.9%
Aggravated Assault	3	5	-40.0%	5	-40.0%	17	17	0.0%	98	117	-16.2%
Armed Robbery	6	3	100.0%	3	100.0%	18	20	-10.0%	99	138	-28.3%
Carjacking	0	1	-100.0%	2	-100.0%	2	5	-60.0%	27	17	58.8%
Homicide	1	1	0.0%	0	N/A	2	0	N/A	8	8	0.0%
Rape	0	0	0.0%	1	-100.0%	0	3	-100.0%	20	27	-25.9%

**Jackson Police Department
Precinct Two Overview for
August 24, 2015 to August 30, 2015
Major Crimes**

Crime	This Wk	Last Wk	Δ%	Last Yr	Δ%	Past 28	Past 28 da.	Δ%	This Year	Last Year	Δ%
Total Major Crimes	35	34	2.9%	56	-37.5%	180	202	-10.9%	1391	1741	-20.1%
Total Property	27	21	28.6%	45	-40.0%	139	165	-15.8%	1074	1421	-24.4%
Auto Burglary	10	12	-16.7%	13	-23.1%	64	66	-3.0%	475	513	-7.4%
Auto Theft	4	4	0.0%	11	-63.6%	21	33	-36.4%	204	232	-12.1%
Business Burglary	4	1	300.0%	4	0.0%	13	12	8.3%	113	180	-37.2%
Grand Larceny	3	1	200.0%	3	0.0%	14	15	-6.7%	41	125	-67.2%
House Burglary	6	3	100.0%	14	-57.1%	27	39	-30.8%	241	371	-35.0%
Total Violent	8	13	-38.5%	11	-27.3%	41	37	10.8%	317	320	-0.9%
Aggravated Assault	3	5	-40.0%	7	-57.1%	17	16	6.3%	117	128	-8.6%
Armed Robbery	2	7	-71.4%	3	-33.3%	19	13	46.2%	138	133	3.8%
Carjacking	2	0	N/A	1	100.0%	3	6	-50.0%	26	24	8.3%
Homicide	0	1	-100.0%	0	0.0%	1	1	0.0%	11	13	-15.4%
Rape	1	0	N/A	0	N/A	1	1	0.0%	25	22	13.6%

**Jackson Police Department
Precinct Three Overview for
August 24, 2015 to August 30, 2015
Major Crimes**

Crime	This Wk	Last Wk	Δ%	Last Yr	Δ%	Past 28 da.	Past 28 da.	Δ%	This Year	Last Year	Δ%
Total Major Crimes	43	23	87.0%	41	4.9%	151	141	7.1%	1103	1156	-4.6%
Total Property	30	19	57.9%	37	-18.9%	120	123	-2.4%	825	882	-6.5%
Auto Burglary	7	8	-12.5%	17	-58.8%	32	29	10.3%	243	184	32.1%
Auto Theft	9	0	N/A	7	28.6%	13	26	-50.0%	140	173	-19.1%
Business Burglary	0	0	0.0%	1	-100.0%	9	11	-18.2%	74	80	-7.5%
Grand Larceny	2	1	100.0%	1	100.0%	23	9	155.6%	49	94	-47.9%
House Burglary	12	10	20.0%	11	9.1%	43	48	-10.4%	319	351	-9.1%
Total Violent	13	4	225.0%	4	225.0%	31	18	72.2%	278	274	1.5%
Aggravated Assault	11	3	266.7%	1	1000.0%	17	4	325.0%	114	128	-10.9%
Armed Robbery	0	1	-100.0%	2	-100.0%	5	10	-50.0%	93	93	0.0%
Carjacking	0	0	0.0%	1	-100.0%	2	2	0.0%	25	20	25.0%
Homicide	1	0	N/A	0	N/A	2	0	N/A	16	9	77.8%
Rape	1	0	N/A	0	N/A	5	2	150.0%	30	24	25.0%

**Jackson Police Department
Precinct Four Overview for
August 24, 2015 to August 30, 2015
Major Crimes**

Crime	This Wk	Last Wk	Δ%	Last Yr	Δ%	Past 28 da.	Past 28 da.	Δ%	This Year	Last Year	Δ%
Total Major Crimes	44	28	57.1%	64	-31.3%	173	237	-27.0%	1147	1500	-23.5%
Total Property	41	26	57.7%	56	-26.8%	154	210	-26.7%	931	1308	-28.8%
Auto Burglary	27	14	92.9%	39	-30.8%	86	120	-28.3%	425	640	-33.6%
Auto Theft	7	5	40.0%	5	40.0%	22	29	-24.1%	150	181	-17.1%
Business Burglary	2	1	100.0%	0	N/A	7	5	40.0%	71	55	29.1%
Grand Larceny	1	1	0.0%	0	N/A	14	6	133.3%	43	76	-43.4%
House Burglary	4	5	-20.0%	12	-66.7%	25	50	-50.0%	242	356	-32.0%
Total Violent	3	2	50.0%	8	-62.5%	19	27	-29.6%	216	192	12.5%
Aggravated Assault	1	0	N/A	2	-50.0%	7	11	-36.4%	60	53	13.2%
Armed Robbery	2	2	0.0%	4	-50.0%	10	11	-9.1%	119	103	15.5%
Carjacking	0	0	0.0%	0	0.0%	1	3	-66.7%	20	15	33.3%
Homicide	0	0	0.0%	1	-100.0%	0	1	-100.0%	1	8	-87.5%
Rape	0	0	0.0%	1	-100.0%	1	1	0.0%	16	13	23.1%