

# JACKSON PUBLIC SCHOOLS

## Safe School Re-Opening Plan



2020-2021

## Table of Contents

JPS will re-open for  
students on  
**August 10, 2020.**

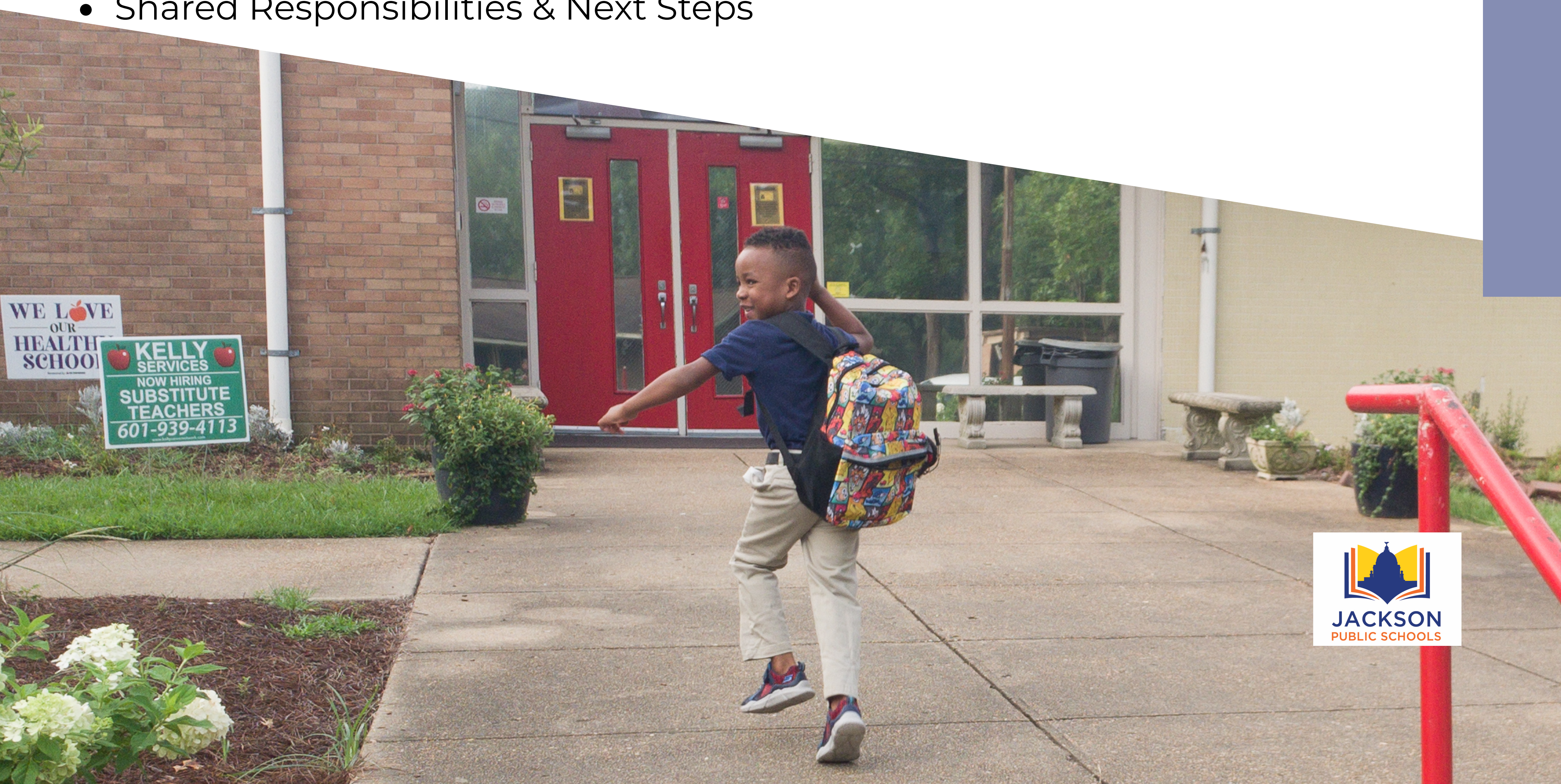
# INTRODUCTION

The Jackson Public Schools team has been hard at work planning for the safe return of our scholars. This document covers the academic schedules, safety measures, and new routines we are utilizing to continue learning and engagement.

Our number one priority is ensuring your child is safe and has a comfortable physical environment. We are sharing this information with our JPS parents and families so you can determine which learning option will be the best fit for your scholar and family. This plan is subject to change. We will continue to refine this plan as circumstances change and in coordination with our health officials, elected leadership, families and community members. As we face these unprecedented times together, we appreciate your continued partnership to protect our scholars and team.

# TABLE OF CONTENTS

- Welcome Letter from Dr. Errick L. Greene
- School Safety Measures
- New Routines & Procedures
- Scholar Learning Options
- Shared Responsibilities & Next Steps



## Letter from Dr. Greene

July 16, 2020

Dear JPS Community,

Thank you for your continued patience and engagement as we've worked to fully develop our school re-opening plan. Our plan is aligned with guidance from national and state health and education officials. While education systems are designed to promote and facilitate social interaction, the time demands that we look for creative new ways to learn safely as we practice physical distancing and minimize the spread of COVID-19. The health, safety, and emotional well-being of our scholars, families and staff remain our highest priorities and at the center of our decision-making.

Based on feedback from various stakeholders and the guidance of our School Reopening Advisory Committee, we present this overview of the JPS plan for reopening our schools. Additional details of our plans will be made available on our website and will be shared with staff members and families over time. This overview is intended to help parents/guardians to make informed choices about the instructional model that best fits their scholar's learning needs.

Due to the COVID-19 pandemic, JPS has moved swiftly to provide each of our scholars with a dedicated technological device to aid in their learning. *All JPS families will have at least **two viable options** for the 2020-2021 school year:*

- **Elementary Scholars** - Traditional/On-Site Instruction OR Virtual Learning
- **Middle School Scholars** - Traditional/On-Site Instruction OR Virtual Learning
- **High School Scholars** - Hybrid Instruction OR Virtual Learning

Given the ongoing health concerns, **we are urging all families who are able to select the virtual model to do so.** This will allow us to support social distancing for those families who will engage in on-site instruction. Still, whether scholars engage in a traditional, virtual or hybrid model, increased access to technology will allow for more opportunities to learn no matter what happens next. In the event of a future school or districtwide closure, the shift to one device to every student will enable us to move to virtual instruction with minimal disruption to learning. We heard very clearly from our stakeholders that there is a wide range of needs in the district, and our plan accommodates those diverse needs (*Each option is described in greater detail on page 6*).

We know that family support will be more critical this year than ever before. Scholars will require close monitoring, continued encouragement, and regular communication with teachers to ensure that they are successful. Therefore, JPS will offer support programs to help family members engage more effectively and ensure that our scholars succeed. Again, we know that families have different circumstances, but we encourage parents/guardians to create a plan for how they will support our scholars in making the shifts that they will experience beginning in the fall.

These are unprecedented times and they call for extremely difficult decisions to be made by all of us. There is no one simple and right answer in this situation. We welcome your continued partnership to help us make the best decisions for each of our scholars, our families, our staff members, and for the Jackson community.

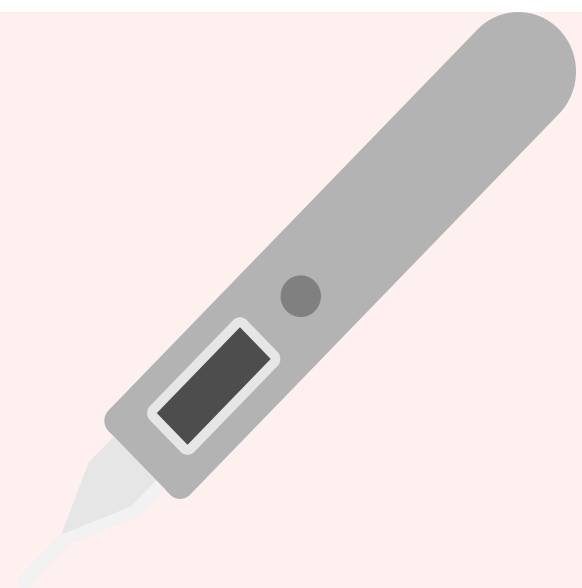
Thank you,



Errick L. Greene, Ed.D.  
Superintendent

# Safety Measures

View our **COVID-19 Prevention Strategies Video** prepared by the Nurses Unit (Office of Climate & Wellness) [linked here](#).



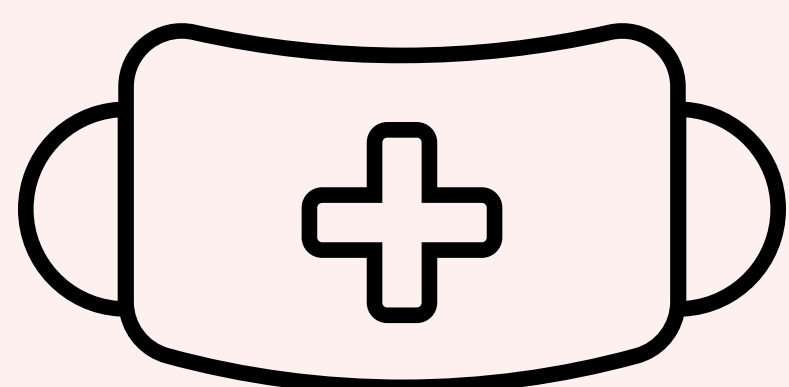
## ENTRY SCREENING

Parents are urged to perform temperature screenings before arriving on campus. Daily temperature checks will be taken as scholars board buses or arrive at school.



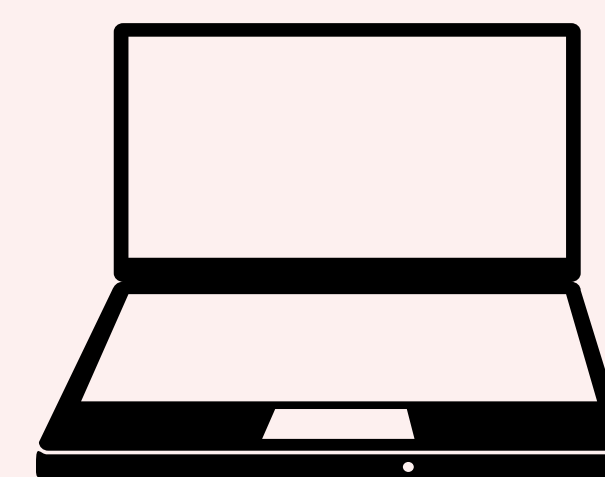
## INCREASED HAND WASHING

Regular handwashing and hand sanitation breaks will be provided throughout the school day.



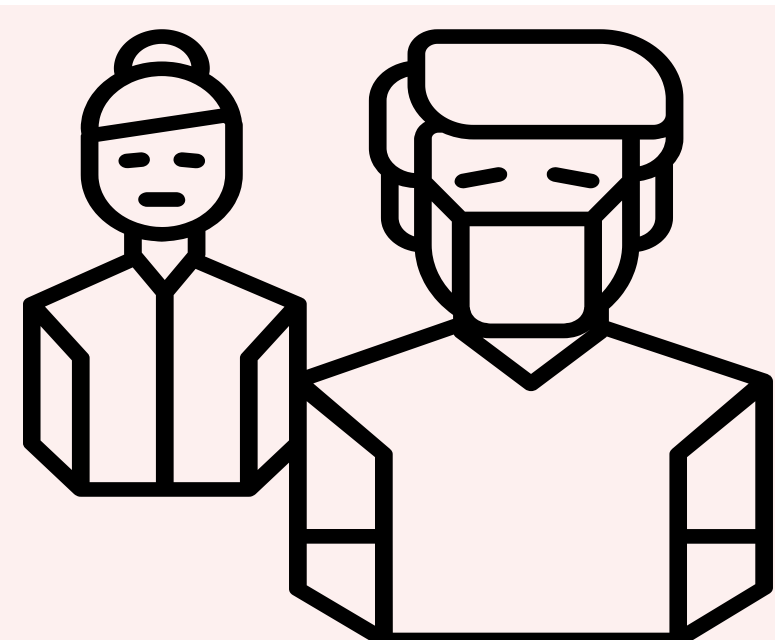
## MANDATORY FACE COVERINGS

Facial coverings will be required from the boarding of a school bus or arrival on campus through the end of the school day. Scholars will be provided two washable and re-usable facial coverings for grades 3 through 12 and 1 face shield for grades Pre-K through 2.



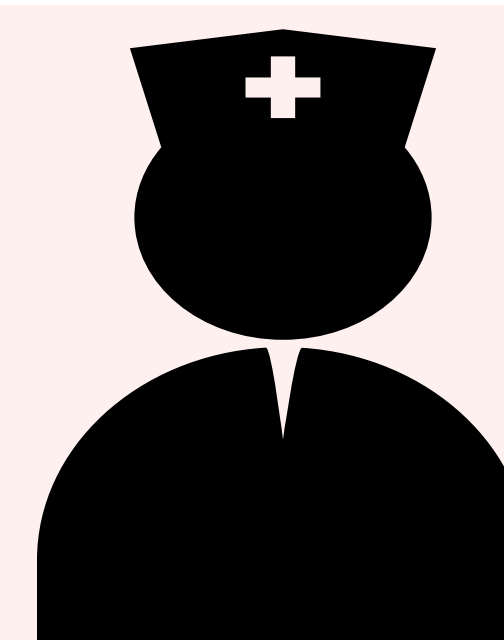
## LAPTOP DEVICES

Each scholar will receive a device along with training on how to navigate activities & properly disinfect the device. Classwork will be conducted using technology.



## SOCIAL DISTANCE

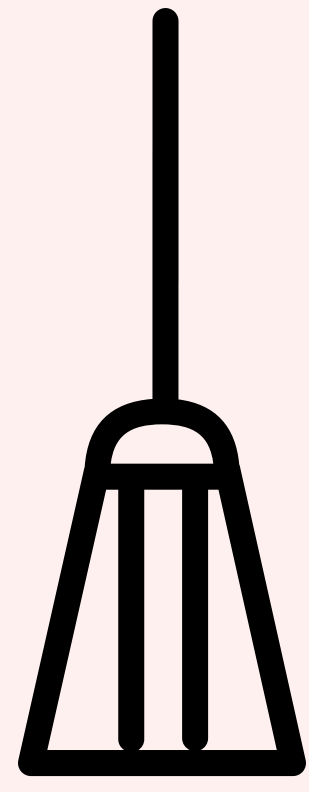
Separation will be maintained to the extent reasonable and practical., including while in hallways, restrooms, cafeterias and other common areas.



## NURSING & WELLNESS

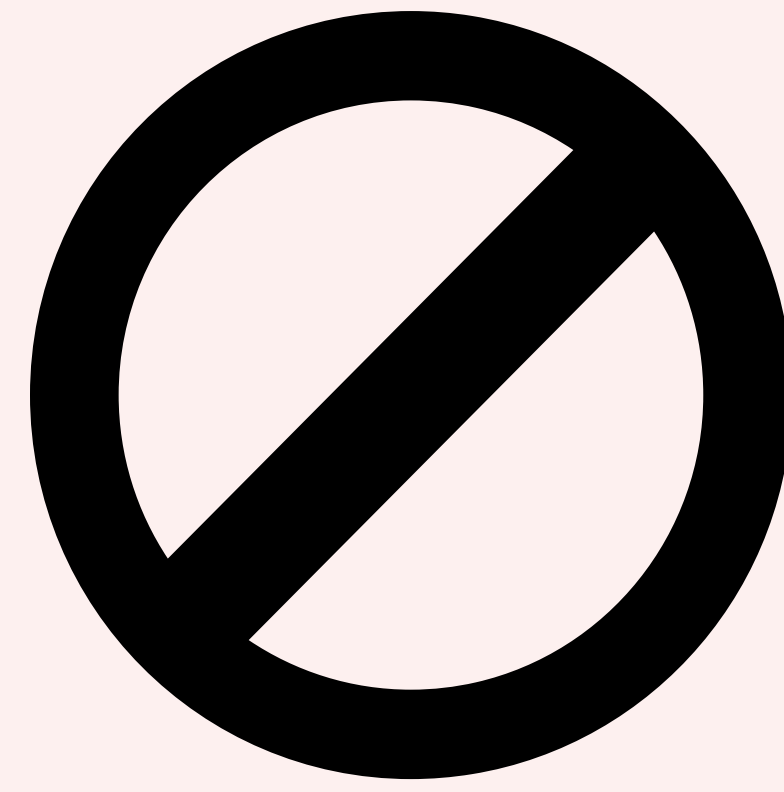
Scholars and staff will be continually monitored. Nurses will be in regular contact with administration should anyone become symptomatic. Parents will be notified if their child becomes symptomatic with recommendations concerning further actions.

# Routines & Procedures



## DEEP CLEANING

All buildings will have daily deep cleaning. High touch points and restrooms will be disinfected throughout the school day.



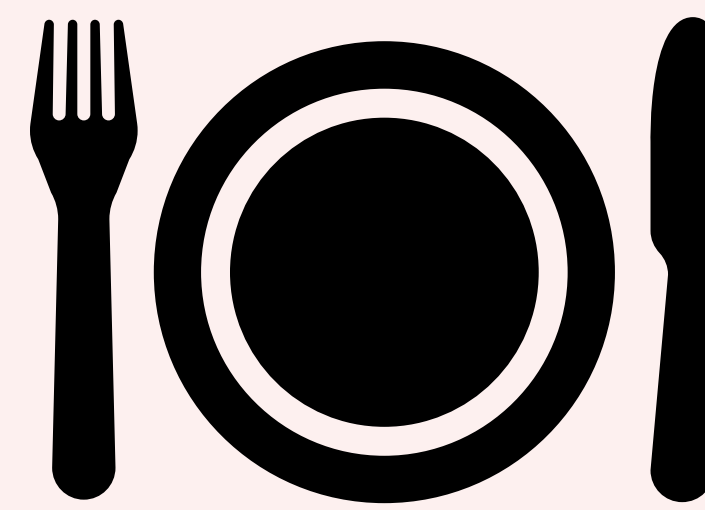
## NO VISITORS

Only scholars and staff will be allowed into buildings. Deliveries will be strictly controlled. Parent meetings will be held virtually or by phone. Scholar pickup and drop off will occur outside entry doors.



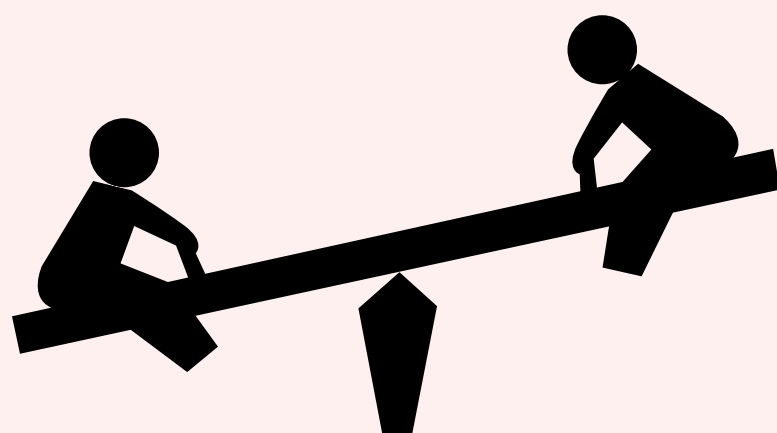
## SCHOOL BUS SAFETY

Temperature checks will be performed before boarding buses. Drivers will be masked and gloved. Scholars will sit in designated areas with mandatory facial coverings. Disinfecting will occur between routes in high touch areas.



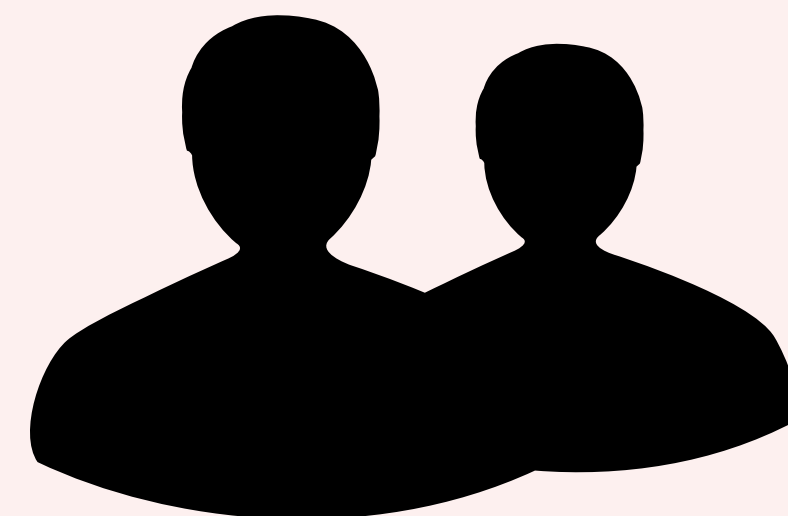
## FOOD SERVICE

Meals will be provided in classrooms or socially distanced in cafeterias. A modified "Grab & Go" meal service will be offered to virtual scholars.



## SCHOLAR MOVEMENT

Schedules will limit large gatherings of scholars and staff. Outdoor activities and "unmasking" breaks will be integrated into the academic schedule.

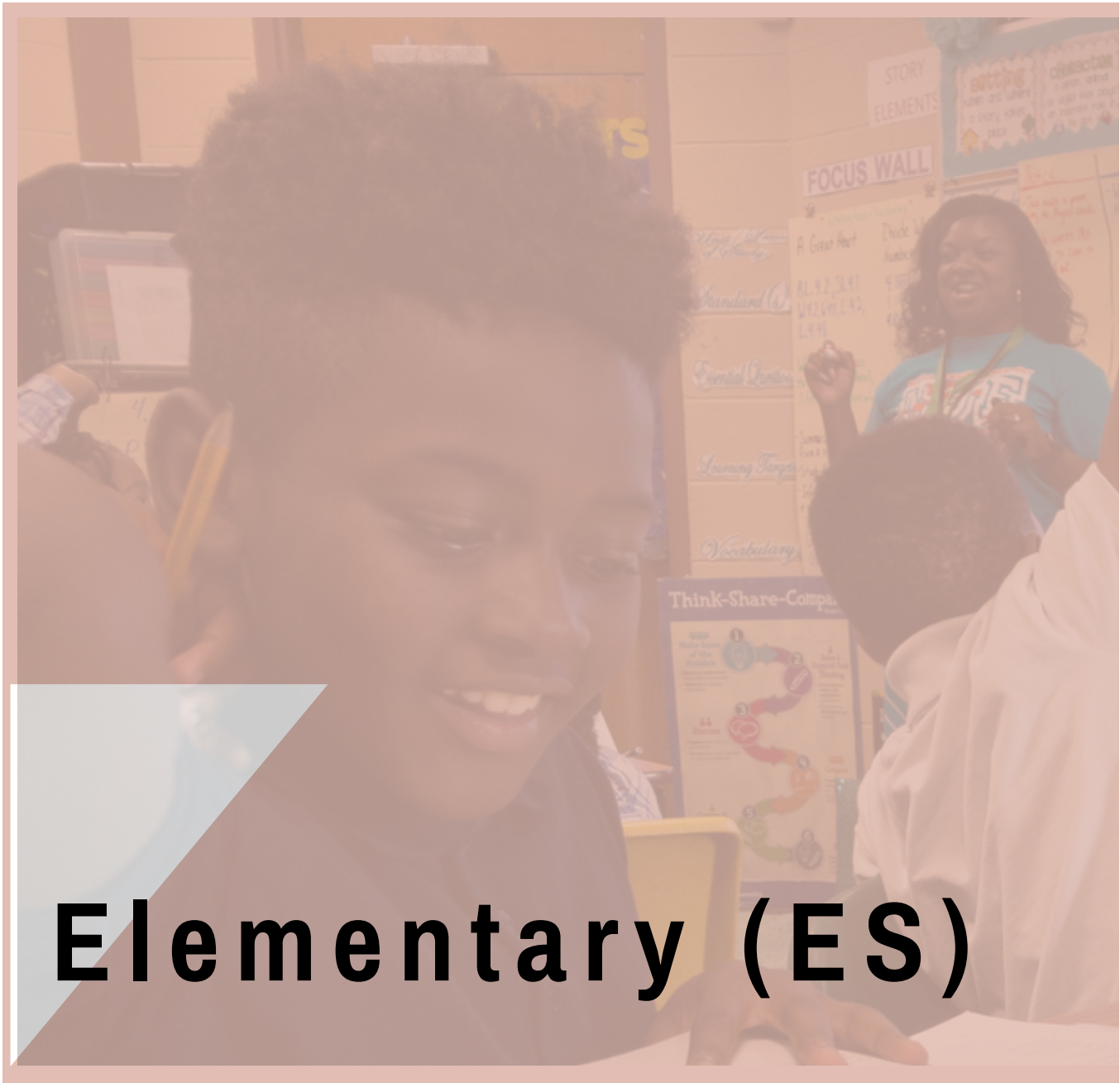


## SOCIAL WORK

Educators and staff will monitor scholars and each other for emotional distress. School counselors will assist with implementation of social-emotional learning and counseling sessions.

# Learning Options

Depending on their grade level, JPS families will have TWO options for educating their scholars this school year.



Elementary (ES)



Middle (MS)



High (HS)

Traditional/ On-Site Learning  
OR Virtual Instruction

Traditional/ On-Site Learning  
OR Virtual Instruction

Hybrid Learning OR  
Virtual Instruction

- The Traditional/ On-Site Learning Program will consist of the following (ES/MS):
- Blended instructional delivery in classrooms Monday-Friday** (frequent technology use, students access learning programs and electronic textbooks, etc.)
  - Extra care and consideration** to be provided for our youngest scholars (environment, behavior expectations, breaks, etc.)
  - Reduced activities to achieve distancing** (assemblies, field trips, athletic programs, etc.)

- Hybrid Learning will consist of the following (HS):
- A/B day schedules**
  - A Day:** 9th/10th grades in person for core subject instruction; 11th/12th grades in virtual elective courses from home
  - B Day:** 11th/12th graders in person for core subject instruction; 9th/10th graders in virtual elective courses from home

- The Virtual Learning Program consists of the following (ES/MS/HS):
- Scholars utilize technology** for both synchronous (real time) and asynchronous (video) learning experiences each day
  - Teachers engage scholars in learning experiences** based on a clearly defined schedule
  - Scholars with special needs are supported** by the classroom teacher as well as other support staff
  - Parents/guardians provide additional support** and guidance with learning outcomes

**Important:** Once selected, families will maintain their instructional option through the end of the grading term.

# Academic Schedule

## ELEMENTARY (Grades PK - 5)

Monday - Friday  
7:30 a.m. - 1:30 p.m.

Elementary schools will use the **virtual** and **on-site** instructional learning models for providing quality instruction in all core academic courses.

## MIDDLE SCHOOL (Grades 6 - 8)

Monday - Friday  
8:00 a.m. - 2:30 p.m.

Middle schools will use the **virtual** learning and **on-site** instructional learning models for providing quality instruction for all courses.

## HIGH SCHOOL (Grades 9 - 12)

Monday - Friday  
9:00 a.m. - 4:00 p.m.

High Schools will use the **virtual** and **hybrid** instructional learning models for providing quality instruction for all credit-bearing courses.

### Exceptional Education:

Scholars that receive instruction in a functional skills classroom will use the **traditional** and **virtual** instructional models for providing quality instruction.

Support services including **Exceptional Education** and **Gifted** (Open Doors) will follow one or more models:

- Staff wearing personal protective equipment (PPE) will “push-in” by providing services to scholars in the classroom
- Staff wearing PPE will pull a scholar out individually or with classroom peer scholars to provide services
- Staff will pull a scholar out with non-classroom peer scholars. All staff and scholars will wear PPE and social distance as much as possible given room constraints.

# Athletics & Co-Curricular Activities

The Mississippi High School Activities Association (MHSAA) voted to delay the start of fall sports by two weeks. We will continue to follow the guidelines given by the MHSAA. If social distancing is feasible and modifications are made, all JPS activities will resume August 24. Due to the fluid nature of the circumstances, this is subject to change.

To ensure that our scholar athletes are safe, the following guidelines will be implemented:

- Implement a district-wide start and end time for all practices in middle and high schools. Practices will occur for 1 ½ hour for middle schools and 2 ½ hours for high schools.
- Middle School and Junior Varsity Football will be shifted to the Spring 2021 season.
- For middle and high schools, non-major sports and extracurricular practices will be held every other day with no practices the day after a game and no weekend practices.
- Custodial schedules will correspond with after-school practice schedules to ensure that buildings and areas used by teams/groups can be disinfected and sanitized afterwards and are ready for use the next school day.



# Shared Responsibilities

Working together,  
we can promote  
learning and safety.



TOPIC	FAMILY RESPONSIBILITIES	JPS RESPONSIBILITIES
PPE & SUPPLIES	<ul style="list-style-type: none"> <li>• Launder/clean face coverings</li> <li>• Replace unserviceable face coverings</li> </ul>	<ul style="list-style-type: none"> <li>• Provide 2 face coverings (Grades 3-12) and 1 face shield (Grades PK-2) for all JPS scholars</li> <li>• Provide hand sanitizer, soap, gloves, and disinfectants to custodial teams</li> </ul>
HEALTH CHECKS	<ul style="list-style-type: none"> <li>• Check your child's temperature each morning</li> <li>• Keep your child at home when sick</li> </ul>	<ul style="list-style-type: none"> <li>• Check temperatures for scholars prior to boarding buses and all staff/scholars at entry of schools</li> </ul>
TECHNOLOGY	<ul style="list-style-type: none"> <li>• Provide internet connectivity for child's device OR indicate need for support with connectivity</li> </ul>	<ul style="list-style-type: none"> <li>• Provide an internet ready device for all JPS scholars</li> <li>• Provide technical support to parents</li> </ul>
REGISTRATION	<ul style="list-style-type: none"> <li>• Register your returning scholar for school online</li> <li>• Register your new scholar at Poindexter Complex by appointment (601) 960-8850</li> </ul>	<ul style="list-style-type: none"> <li>• Offer online registration support to families</li> <li>• Streamline new scholar registration appointment process</li> </ul>
COMMUNICATION	<ul style="list-style-type: none"> <li>• Communicate any symptoms or illness to your child's teacher</li> <li>• Provide updated contact information in event of a move or life change</li> </ul>	<ul style="list-style-type: none"> <li>• Provide frequent and timely updates on our website and social media channels (Facebook, Twitter, &amp; YouTube)</li> <li>• Launch new JPS mobile app with push notifications with key updates</li> </ul>
VIRTUAL INSTRUCTION	<ul style="list-style-type: none"> <li>• Monitor your child's progress with virtual learning</li> <li>• Provide a quiet space and consistent schedule for completing online coursework</li> </ul>	<ul style="list-style-type: none"> <li>• Provide high quality virtual instruction</li> <li>• Develop engaging units for scholars learning virtually</li> </ul>

## School Re-Opening Advisory Committee

The Jackson Public Schools administration wishes to thank the members of the **School Re-Opening Advisory Committee** (SRAC). The committee — made up of city leaders, health professionals, JPS parents and scholars, board members, and district staff — conducted five virtual meetings and considered what was best for students, staff, and the community through the lens of physical health, social-emotional health, & student achievement. We are also appreciative of the scholars, parents, and teachers who contributed their ideas and wisdom to the **Superintendent's Re-Opening Panels**. Your thoughtful counsel was vital to the formation of this Safe Re-Opening Plan.





**JACKSON**  
**PUBLIC SCHOOLS**

Transforming lives through  
excellent education

## Core Values

At Jackson Public Schools, we believe in the importance of equity, excellence, growth mindset, relationships, relevance, and positive and respectful cultures.

### EQUITY

Our vision of equity, put simply, is “all means all.” We ensure equity by celebrating each scholar’s individuality, interests, abilities and talents; providing each scholar in each school with equitable access to high-quality instruction, courses, and resources; and holding high expectations for all scholars to graduate college-ready and career-minded. Similarly, we recognize and value the individual abilities, experiences and talents of our staff; providing all staff with equitable access to opportunities for development and growth; and ensuring that such opportunities are provided through clear and transparent processes.

### EXCELLENCE

High expectations for our scholars help to prepare them for college and career paths. High expectations from and for all adults foster ownership, consistency, and transparency. Every member of our district performs with an attention to detail and the quality that each task demands in order to achieve great outcomes.

### GROWTH MINDSET

Our leaders—scholars and staff—thrive in environments where belief in their abilities is affirmed. Everyone in the organization embraces the ideal that effort and perseverance lead to success.

### RELATIONSHIPS

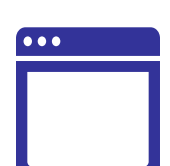
It is essential to develop relationships through mutual respect of culture, social context, and community. This allows us to create a community of safety, trust, productive vulnerability, and genuine connection as we celebrate successes and value opportunities for constructive feedback.

### RELEVANCE

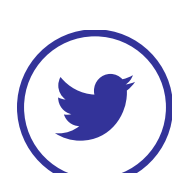
Scholars experience relevant education that is engaging, motivating, and inspiring, leading to a lifelong commitment to learning. Our scholars must learn to connect with each other, the larger community, and the 21st-century world, ultimately developing agency to contribute to positive change in Jackson, in Mississippi, and in the world.

### POSITIVE AND RESPECTFUL CULTURE

Scholars and staff thrive in learning environments where growth and achievement are the highest priorities and climates are safe, positive, and respectful. These environments engage and excite all scholars, leaving them hungry for more knowledge. All adults contribute to a positive and respectful culture allowing them to experience more productivity, increased retention, and joy at work.



[jackson.k12.ms.us](http://jackson.k12.ms.us)



[@JPSDistrict](https://twitter.com/JPSDistrict)



[YouTube.com/JPSITV](https://www.youtube.com/JPSITV)



[Jackson Public Schools](https://www.facebook.com/JacksonPublicSchools)



JULY 2020



[jackson.k12.ms.us](http://jackson.k12.ms.us)



[@JPSDistrict](https://twitter.com/JPSDistrict)



[YouTube.com/JPSITV](https://www.youtube.com/JPSITV)



Jackson Public Schools

Jackson Public Schools

662 S. President St.

Jackson, MS 39201

contact us:

[covid19@jackson.k12.ms.us](mailto:covid19@jackson.k12.ms.us)

## NOTES

[illegible]



**JACKSON**  
**PUBLIC SCHOOLS**

---

Transforming lives through  
excellent education